

# **RX-7** Ultra High-speed Placer

*Unrivaled productivity in a compact footprint*  
*Advanced high-speed and high-accuracy*



leads to

LOWEST COST  
OF OWNERSHIP

**JUKI**

# The next generation high-density placement

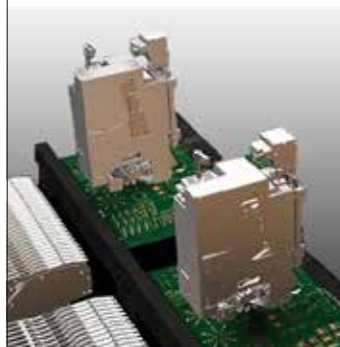
## Super-high Productivity

The RX-7 has three key features for client production:  
Super rotary heads, parallel head configuration and dual lane conveyor.

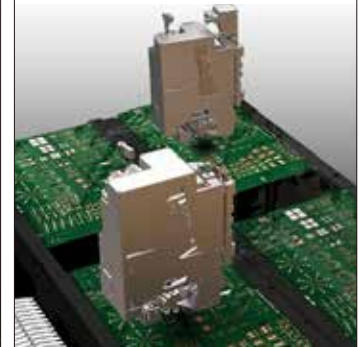


super rotary head

parallel head configuration



dual lane conveyor standard



## Super Slim Design

Super-slim 998 mm width! At 75,000 cph, the RX-7 provides an excellent placement per square foot.

998 mm



rated  
75,000  
cph<sup>\*</sup>

<sup>\*</sup> under optimal conditions



Ultra High-speed Placer

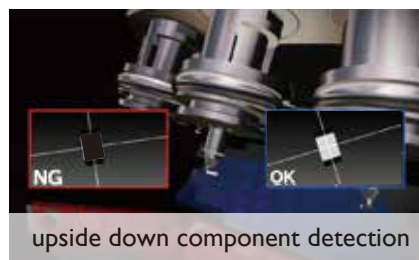
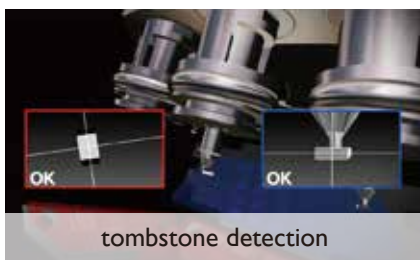
# RX-7

Placement speed (optimum): 75,000 cph  
Component size: 01005 to 5 x 5 mm

# Unrivaled productivity in a compact footprint

## High Quality

The head-mounted centering camera can also detect tombstones, component presence/absence, and upside down components. Small components are placed accurate and reliable.



## Total Line Solution

*JUKI's proposal - total line solution.*

*All for realizing the customer's high-productivity  
high-quality production.*

Production lines using these models are ideal from high mix low-volume production to high-volume production. The line flexibility, quality and speed are ideal for a wide variety of production needs.



PVB Visual Inspection  
Machine (SPI)

**RV-1**

Ultra High-speed Placer

**RX-7**

Ultra High-speed Placer

**RX-7**

Flex Placer

**RX-6**

PVB Visual Inspection  
Machine (AOI)

**RV-1**

# Specifications

		<b>RX-7</b>
Board size (max.)	(single mode) (dual mode)	360 × 450 mm 360 × 250 mm
Component height		3 mm
Component size		01005 to 5 × 5 mm
Placement speed	Chip (Optimum) (IPC9850)	75,000 cph 49,000 cph
Placement accuracy	(01005 to 0402) (squared chip equivalent 0603 size or larger / squared chip LED)	±40 μm ±60 μm
Component loading quantity	(with electronic 8 mm double tape feeder)	76
Power supply		200 to 415 VAC, 3-phase
Apparent power		3.3 kVA
Operating air pressure		0.5 ±0.05 MPa
Air consumption (standard)		20 l/min (during normal operation)
Machine dimensions (W × D × H) <sup>1)</sup>		998 × 1,895 × 1,580 mm
Mass (approximately)		1,950 kg

<sup>1)</sup> for conveyor height of 950 mm, depth excluding the LCD, height excluding signal light

## Options

Conveyor	Support-pin / Support-sponge
Other	Dedicated nozzle / Spare nozzle cartridge / Joint cable
Software	IS Lite line control software
Component handling and feeders	Feeder trolley / Electronic tape feeder / Tape reel mounting base / Feeder stocker Splicing jig / Feeder calibration jig with monitor / Electric trolley power station

## Line Control Software

Product name	Major functions
IS Lite	User definition / Facility definition / Component DB / Creation of production programs / Line optimization / Line monitoring / CAD conversion <sup>1)</sup> / Download of production programs to multiple lines <sup>2)</sup>

<sup>1)</sup> CAD conversion is optional

<sup>2)</sup> Availability TBD

❖ Please refer to the product specifications for details.



### JUKI CORPORATION HEAD OFFICE

The activities of research, development, design, sales, distribution, and maintenance services of industrial sewing machines, household sewing machines and industrial robots, etc., including sales and maintenance services of data entry systems.

### Juki Automation Systems Europe:

# JUKI®

## JUKI CORPORATION

Electronics Assembly Systems Business Unit

#### Headquarter

Solothurn, Switzerland  
Phone: +41 32 626 29 29  
Fax: +41 32 626 29 30  
info-europe@jas-smt.com  
www.jas-smt.com

Nuremberg, Germany  
Phone: +49 911 93 62 66 0  
Fax: +49 911 93 62 66 26

Gatwick, England  
Phone: +44 1293 80 45 62  
Fax: +44 1293 80 45 72

2-11-1, Tsurumaki, Tama-shi, Tokyo 206-8551, JAPAN  
Phone: +81 42 357 2293 Fax: +81 42 357 2285

Specifications and appearance may be changed without prior notice.

<http://www.juki.co.jp>

Sep-2014/Rev.01